



Company Profile

 www.AlwefeQ.com

B.Center Sharjah free zone -Sheikh
Mohammed Bin Zayed Rd - Sharjah UAE
info@AlwefeQ.com

About US

ALWEFEQ COMPANY FZE

"Driven by Quality. Powered by Performance."

At ALWEFEQ COMPANY FZE, we're driven by a mission to deliver top-tier industrial equipment and unmatched service to meet the growing demands of the construction, agriculture, industrial, and oil & gas sectors. Built on a foundation of excellence, we offer a wide selection of high-performance products including Centrifugal pumps, Generators, Air compressors, Batch mixers, Tanks, and essential spare parts. Every solution we provide is designed to ensure maximum reliability, efficiency, and value.

With a strong focus on quality and fast, dependable delivery.

ALWEFEQ COMPANY FZE is your trusted partner for powering progress.



Centrefugal Pump

Submersible Pumps operate while fully submerged in the fluid they are pumping, making them ideal for draining flooded areas, sewage systems, deep wells, and construction sites. Built for durability and high-performance under harsh conditions, they come in various power capacities and materials.





Solids / Slurry Pumps

High-performance mud pump engineered for pumping drilling fluids and viscous slurries under high pressure. Ideal for oilfield, construction, and mining applications. Powered by a reliable diesel engine, ensuring efficient operation in remote and rugged environments .

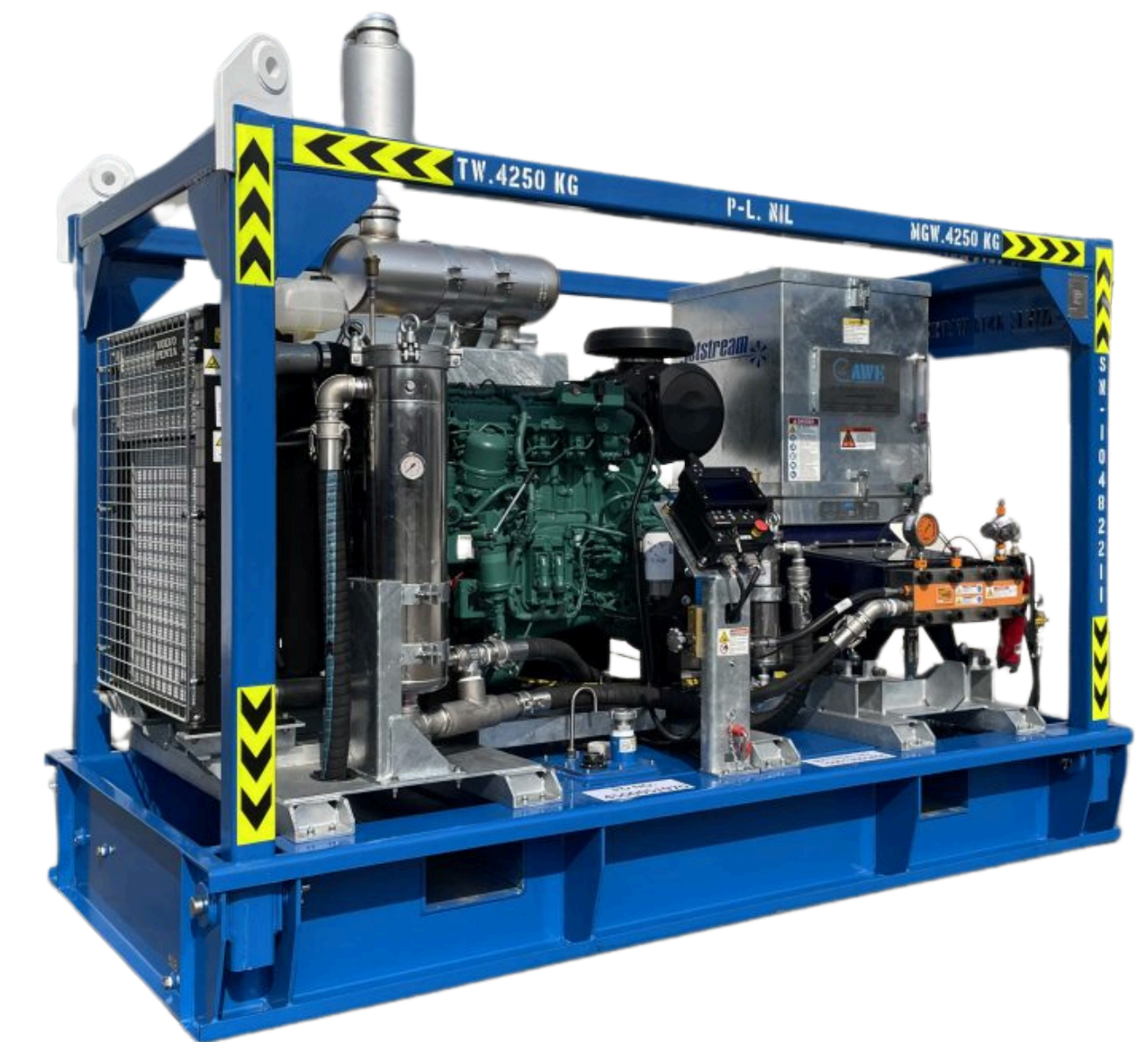
- Pump Type: Heavy-duty slurry pump
- Engine: Diesel engine
- Features: Designed for handling abrasive slurries in mining and industrial applications



Acid Pump

These pumps are essential for accurately injecting acidic fluids into oil or gas wells to enhance hydrocarbon production, while also serving critical functions in corrosion control, wax and scale removal, and overall reservoir management

Centrifugal Pump



Centrifugal Pump

Our Standard Centrifugal Pumps are designed for reliable performance in handling clean or slightly contaminated liquids. Ideal for water transfer, circulation, and irrigation systems, these pumps provide consistent flow and are suitable for industrial, oil & gas, commercial, and municipal use.

Centrefugal Pump



High-Pressure Pump

High-Pressure Pumps are designed to generate high discharge pressure, suitable for demanding applications such as industrial washing,

- Max Pressure: 2800 Bar
- Flow Rate: Up to 30 L/min
- Engine: Doosan Diesel
- Frame: Skid-mounted with integrated safety cage



Vacuum Pump

Submersible Pumps operate while fully submerged in the fluid they are pumping, making them ideal for draining flooded areas, sewage systems, deep wells, and construction sites. Built for durability and high-performance under harsh conditions, they come in various power capacities and materials.



Self-Priming Pump

Self-Priming Pumps are engineered to re-prime themselves after the pump casing becomes dry or air-filled. These pumps are ideal for dewatering, stormwater management, and fluid transfer operations where reliability and ease of maintenance are essential

Generator

Baldwin Generator

Reliable. Durable. Built for Performance.

The Baldwin Generator is engineered to deliver consistent and efficient power in demanding environments. Designed for both industrial and commercial use, it features a robust engine, smart control system, and low-maintenance operation. Ideal for backup power or continuous supply, Baldwin ensures your operations run smoothly, even in the toughest conditions.



Generator



GES B60 GENSET

- GES B60 GENSET
- Engine Model: Baudouin 4M06G10D0/S
- Frequency: 50 Hz, 60 Hz
- Power Output: 60 KVA
- Connection: 3 Phases
- Canopy Type: Open / Close



GES B50 GENSET

- GES B50 GENSET
- Engine Model: Baudouin 4M06G10D0/S
- Frequency: 50 Hz, 60 Hz
- Power Output: 50 KVA
- Connection: 3 Phases
- Canopy Type: Open / Close



GES B20 GENSET

- GES B20 GENSET
- Engine Model: Baudouin 4M06G4D0/S
- Frequency: 50 Hz, 60 Hz
- Power Output: 20 KVA
- Connection: 3 Phases
- Canopy Type: Open / Close

Generator



GES B60 GENSET

- GES B60 GENSET
- Engine Model: Baudouin 4M06G10D0/S
- Frequency: 50 Hz, 60 Hz
- Power Output: 60 KVA
- Connection: 3 Phases
- Canopy Type: Open / Close



GES B50 GENSET

- GES B50 GENSET
- Engine Model: Baudouin 4M06G10D0/S
- Frequency: 50 Hz, 60 Hz
- Power Output: 50 KVA
- Connection: 3 Phases
- Canopy Type: Open / Close



GES B20 GENSET

- GES B20 GENSET
- Engine Model: Baudouin 4M06G4D0/S
- Frequency: 50 Hz, 60 Hz
- Power Output: 20 KVA
- Connection: 3 Phases
- Canopy Type: Open / Close

Air Compressor

Capco Air Compressor

Powerful. Mobile. Efficient.
The Capco diesel-powered air compressor delivers high-performance compressed air for heavy-duty applications. Built with a reliable diesel engine, it ensures consistent airflow even in remote or off-grid locations. Ideal for construction, mining, and industrial operations, Capco compressors are engineered for durability, fuel efficiency, and easy mobility.



INDUSTRIAL EQUIPMENT

Air Compressor



U 250 Air Compressor

- The U 250 is a compact, versatile air compressor designed for light industrial and workshop use. It offers consistent air output, easy operation, and durability for daily tasks where mobility and reliability are key.



XAS 400 Air Compressor

- The XAS 400 delivers 400 CFM of compressed air with dependable performance in harsh environments. Designed for construction, mining, and utility applications, it features a rugged build, fuel efficiency, and minimal maintenance requirements.



XATS 350 Air Compressor

The XATS 350 is a high-pressure air compressor suitable for demanding applications such as sandblasting, drilling, and quarry operations. It delivers stable pressure and air output with advanced control features and reliable diesel-powered performance.

Air Compressor



XATS 800 Air Compressor

- Offering up to 800 CFM, the XATS 800 is built for heavy-duty applications requiring continuous, powerful air flow. It's ideal for pipeline services, oil and gas, and large-scale industrial projects, ensuring reliability even under extreme workloads.

ZAMS 850 Air Compressor

- The ZAMS 850 is an advanced oil-free compressor designed for industries where air purity is critical, such as food, pharmaceuticals, and electronics. With noise-reduction features and consistent performance, it ensures clean, dry compressed air.

XAHS 750 Air Compressor

The XAHS 750 combines high air flow with portability, making it perfect for site operations like abrasive blasting, oil field work, and heavy equipment servicing. Built for durability and fuel efficiency with user-friendly control systems.

Tanks

We offer a wide range of heavy-duty tanks designed for safe storage and transport of fuel, water, acid, vacuum waste, and frac fluids.

Built to meet rigorous industrial standards, each tank is engineered for maximum durability, corrosion resistance, and operational safety. Suitable for use in construction, oil & gas, agriculture, and environmental services.



Tanks



Fuel Tank

- Introducing our 32,000-liter trailer diesel tank—built for efficiency and reliability. Designed to meet heavy-duty fuel transportation needs, this high-capacity tank ensures safe storage and hassle-free delivery. Engineered for durability, it's the perfect solution for industrial, agricultural, and commercial fuel supply demands.”



Storage Tank

- Storage Tanks offer multi-purpose solutions for storing oil, water, chemicals, and other industrial fluids. Available in vertical or horizontal designs, they provide safe, long-term storage with options for insulation, level indicators, and customized fittings.



Vacuum Tank

Our vacuum waste tank is engineered for safe and efficient collection of liquid waste, sludge, and slurry. Designed with heavy-duty steel and leak-proof seals, it's ideal for municipal, industrial, and environmental waste management operations.

Tanks



Acid Tank

- Acid Tanks are engineered to safely store and handle aggressive liquids such as sulfuric acid, hydrochloric acid, and other corrosive chemicals. Made from high-grade, chemical-resistant materials (like HDPE, FRP, or coated steel), they are ideal for chemical plants, refineries, and industrial facilities.



Water Tank

- Our Water Tanks are built to store and distribute clean or raw water efficiently across residential, commercial, and industrial sites. Available in various capacities and materials (plastic, steel), they offer high durability, UV resistance, and easy maintenance.



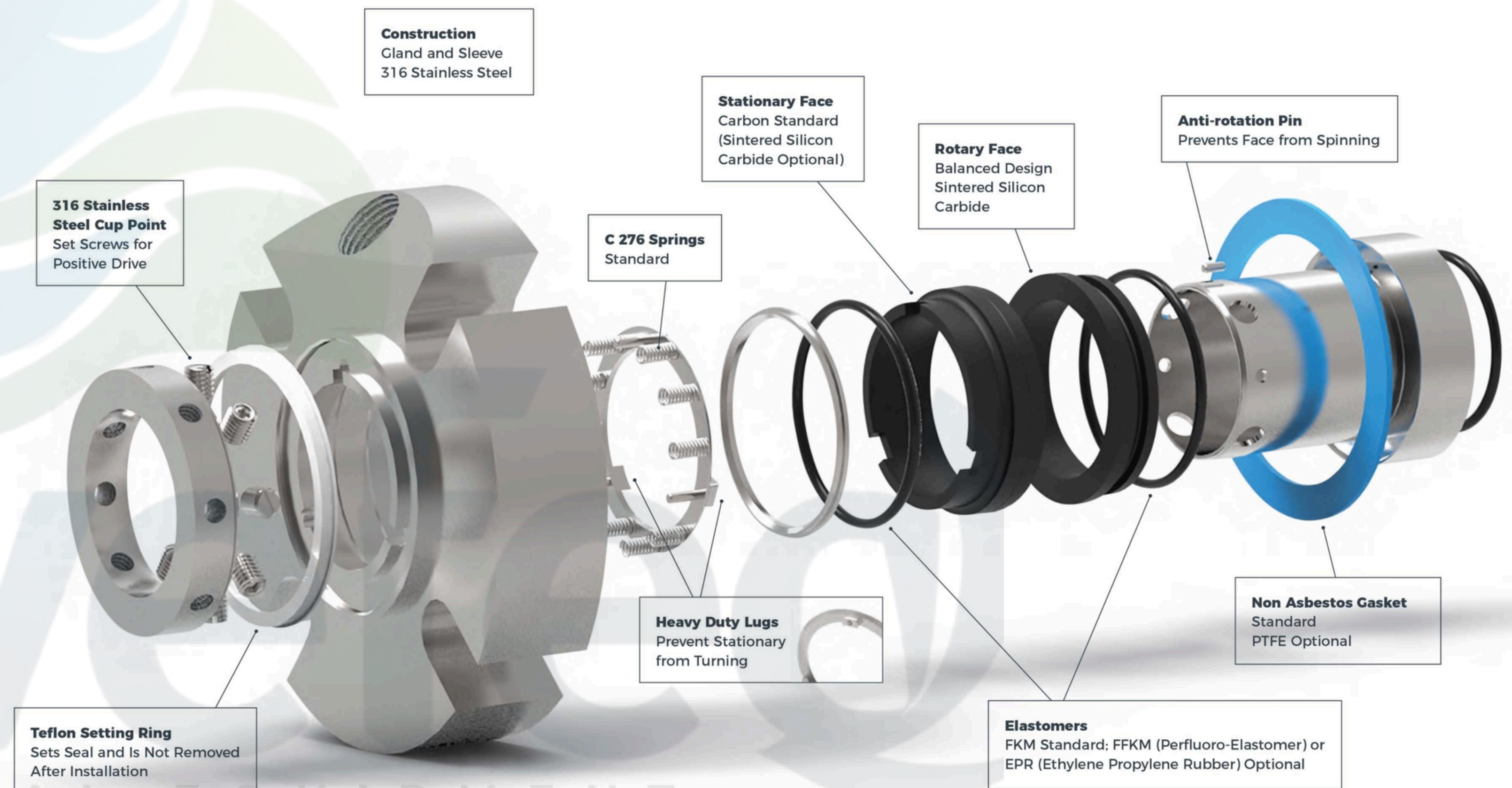
Frack Tank

- Frack Tanks are robust, mobile steel tanks used to store water, chemicals, or flowback during hydraulic fracturing (fracking) and oilfield operations. Their large capacity, reinforced structure, and mobility make them essential for remote energy sites and temporary storage needs.

Spare Parts

Industrial Spare Parts

Engineered for Efficiency. Built to Last. Our range of industrial spare parts includes mechanical seals, butterfly valves, and hammer unions—all manufactured to withstand high pressure, temperature, and corrosive environments. Designed for seamless integration and long service life, these components ensure the reliability and performance of your critical systems in oil & gas, petrochemical, and heavy industrial operations.





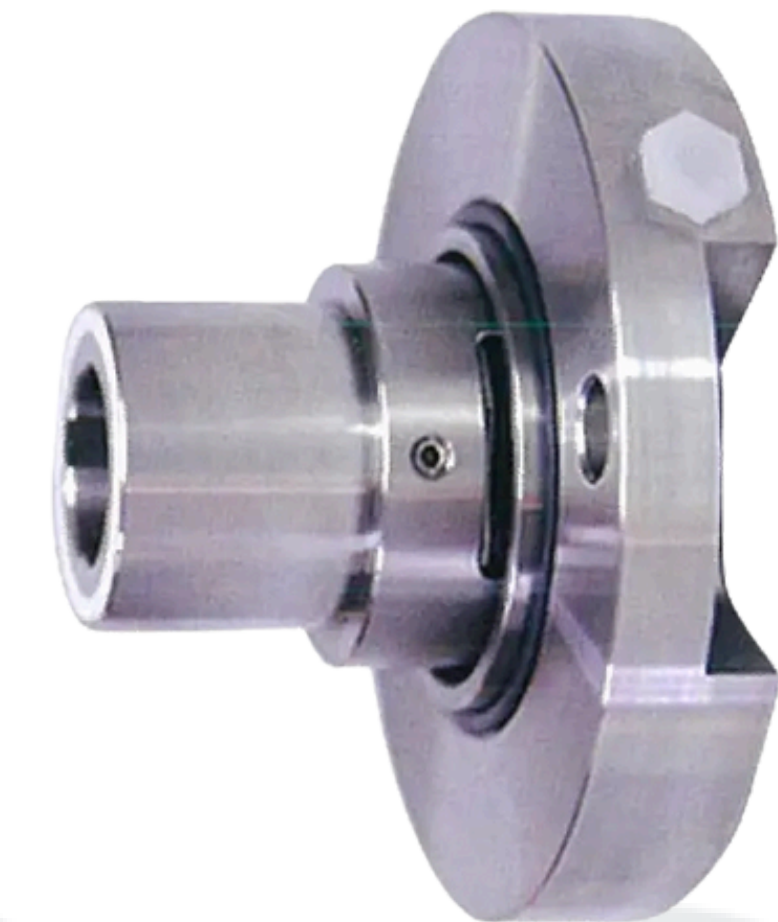
HUU803

- The mechanical seal of type HUU803 is in accord with GB6556-94, multi-spring, unbalanced structure, transmission seat arrives; It is Independent of the rotation direction of pump shaft the pressure of sealant must be higher than sealed medium 0.1~0.2Mpa.



HQ3272

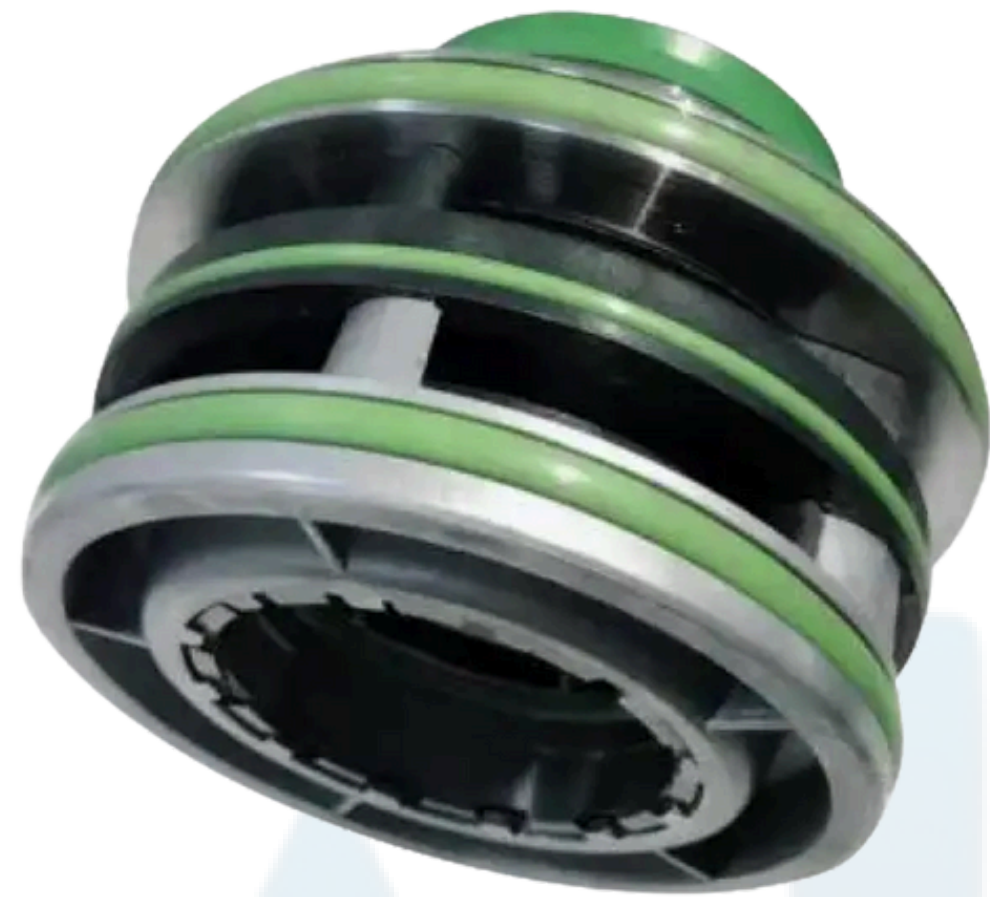
- HQ3272 type mechanical seal is mainly used in various imported multi-stage pumps for various water treatment conditions. Its compact design and short appearance size make it suitable for use in any working condition, and it is easy to install and operate.



GSHU3

- The GSHU3 series is widely used, has strong interchangeability, and the sealing ring is not tightly embedded, making it easy to replace.
- The push ring is stuck by the drive lap to prevent the spring from falling off. The static ring can be limited, and the spring travel is limited to avoid excessive wear of the carbon ring. The overall assembly of the machine seal is easy to install and disassemble.

Mechanical Seal



HQFS

- This is suitable for wastewater, sewage, surface water and clean water transportation systems in municipal, construction and some industrial fields. Provides additional reliability and leak-proof capabilities to ensure smooth pump operation.



WPMS

- Seal Characteristics : Single acting, Unbalanced, Inside mounted
 - Application : Water pump, Sewage & Submersible pumps
 - Face Materials : Carbon, Tungsten carbide, Silicon carbide, Ceramic
 - Metal Parts : SS316, SS304 Secondary seal : Elastomers, Nitrile, Viton
- Operating Limits : Shaft dia : 12mm to 100mm, Pressure " 10 bar(max), Temp:- 20 to 180 deg C



CSMS

- Seal Characteristics : Single acting, Unbalanced, Inside mounted
 - Application : Water pump, Sewage pump, Submersible pumps
 - Face Materials : Carbon, Tungsten carbide, Silicon Carbide, Ceramic
 - Metal Parts : SS316, SS304 Secondary Seal : Elastomers, Nitrile, Viton
- Operating Limits : shaft dia : 10mm to 100mm, Pressure : 10 bar(max), Temp: 20 to 220 deg C

HAMMER UNION

Hammer Union

High-Pressure. Leak-Proof. Field-Proven.

Hammer unions are rugged connectors designed for quick and secure joining of piping systems in high-pressure applications. Manufactured from high-strength alloy steel, they ensure reliable performance in oil & gas, drilling, and industrial fluid handling. Available in multiple sizes and pressure ratings to suit demanding environments.



HAMMER UNION



FIG 1502

- They are used in mud lines, manifold service and truck mounting applications running air, water, oil, gas or mud up to 15,000 psi non-shock cold working pressure.
- supplies Hammer union FIG 1502 with connection threaded, welded and sizes ranging from 1" – 4".

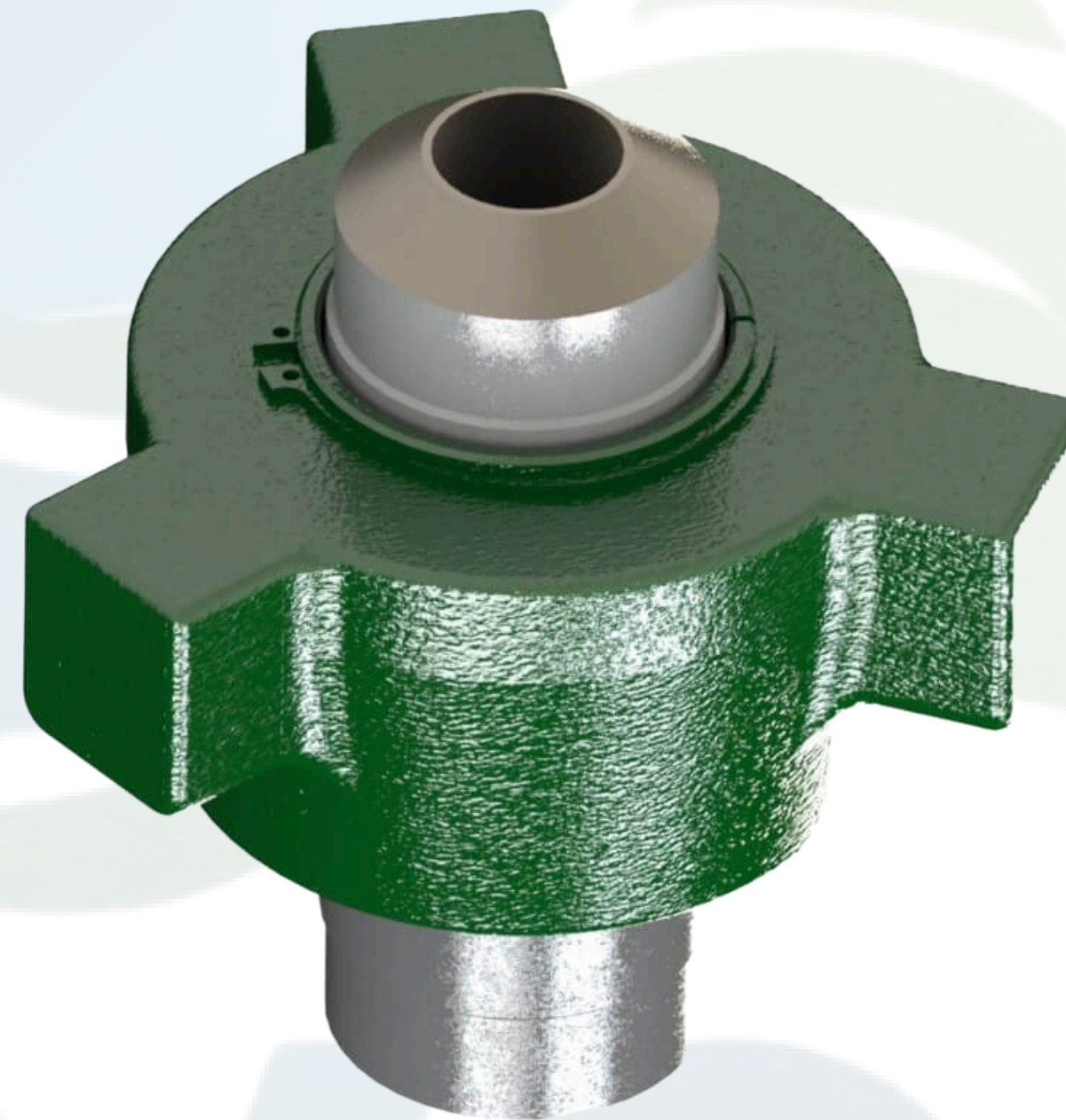


FIG 2202

- Hammer Union FIG 2202 is specially designed for sour gas service.
- It is replaceable lip style rubber seal with stainless steel anti-extrusion ring.
- FIG 2202 with connection threaded, welded and sizes ranging from 1" – 4".



FIG 602

Hammer Union FIG 602 is used in water, oil, gas and mud service. It is replaceable lip style rubber seal with stainless steel anti-extrusion ring, with connection threaded, welded and sizes ranging from 1" – 4"

HAMMER UNION



FIG 206

Hammer Union FIG 206 is similar to Fig 200 with a secondary seal to supplement the metal-to-metal design. Hammer Union FIG 206 is designed as heavy duty, high pressure flow line connectors and recommended for use in corrosive environments.



FIG 1002

- Designed as heavy duty, high pressure flow line connectors.
- - chemical plants, on marine dredging vessels, in strip mines and in the oil industry.
- - connection threaded, welded and sizes ranging from 1" – 4".



FIG 207

- Resilient O-ring in the blanking cap to provide an efficient and leak-proof seal suitable for 2000 PSI CWP.
- fully interchangeable with figure 200 and 206 unions
- with connection threaded, welded and sizes ranging from 3", 4", 6".

BUTTERFLY VALVES

A butterfly valve is used to manage the flow of a medium. It can effectively start, regulate, or stop the flow of a medium. Due to the affordability and efficiency of butterfly valves,

INDUSTRIAL EQUIPMENT



BUTTERFLY VALVES



Seated Ductile Iron

- Butterfly valves are designed for chilled & hot water to be operated by hand lever or gear box. Widely used in liquids, steam, cryogenics, cooling water, air, gasses, firefighting & Vacuum services.
- Size Range: 2" to 8" (Special size can be customized)
- Pressure Range: 1.0 to 1.6MPa



Gear Operated Lug

- butterfly valve is usually used where the valve is at the end of a pipe since there will be no 2nd flange to secure the studs.
- Size Range: 2" to 6"
- Pressure Range: 1.0 to 6.4MPa
- Material: Cast Iron, Cast Steel, Ductile Iron, Stainless Steel



Manual Operated Flange

- Butterfly valves can be made according to multiple design standards that including GB, ANSI, API 6D and JIS. Flange butterfly valves are used in a wide range of applications, including air, water, steam, various corrosive media, mud, oil, etc.
- Size Range: 2" to 40"
 - Pressure Range: 1.0 to 1.6MPa



Thank You!

Contact Us



Phone

971 - 528 024 494



Mail

info@alwefeq.com



Website

www.alwefeq.com



Address

B.Center Sharjah free zone -
Sheikh Mohammed Bin
Zayed Rd - Sharjah UAE

Olivia Wilson